



#SIGNALLING



As we usher in the new presidency of the Council of the European Union we have to ask...



Poland

FROM 1 JANUARY TO 30 JUNE 2025



Denmark

FROM JULY 1 TO DECEMBER 30 2025

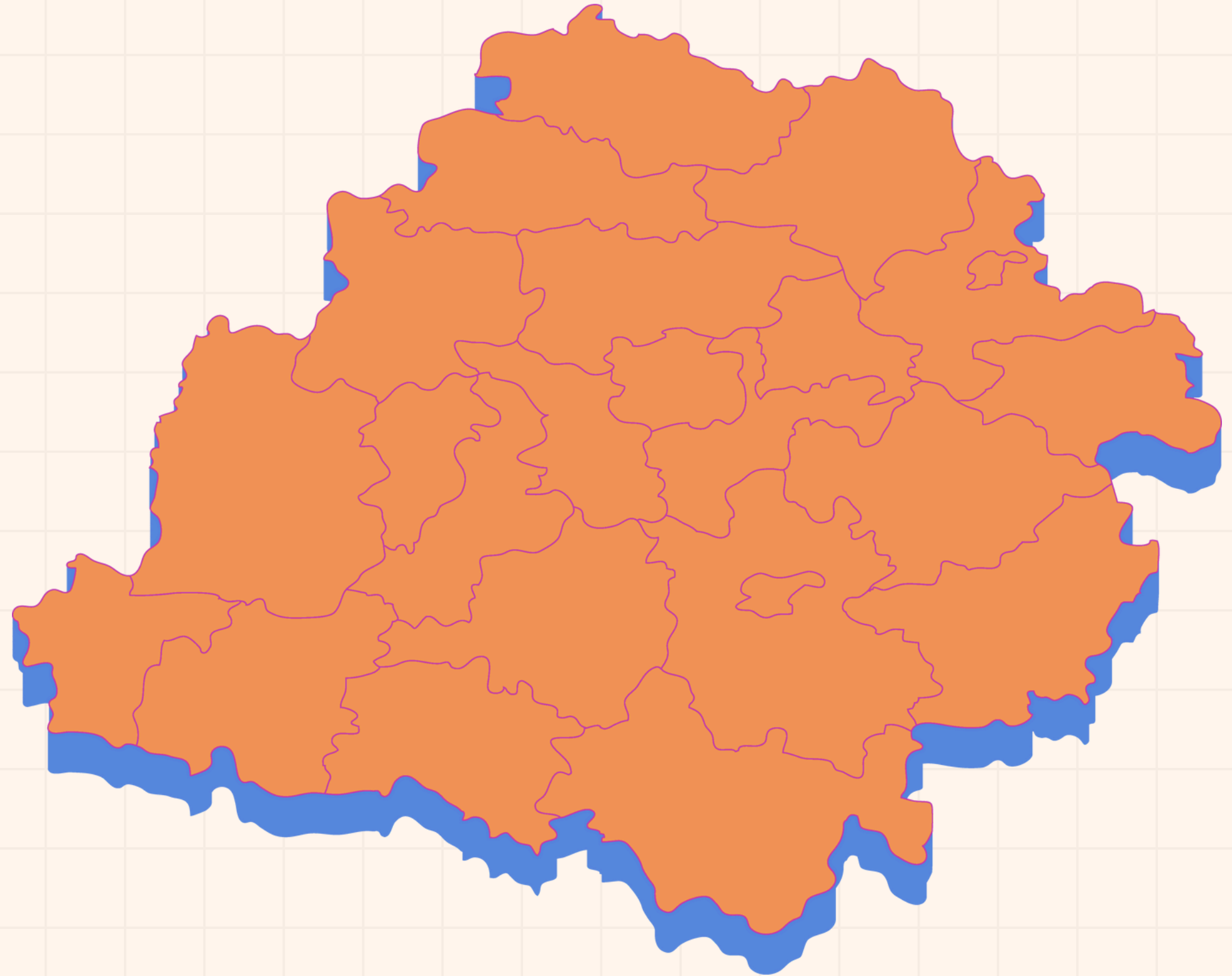
What do we know about the ERTMS deployment in these countries ?



LET'S FIND OUT...

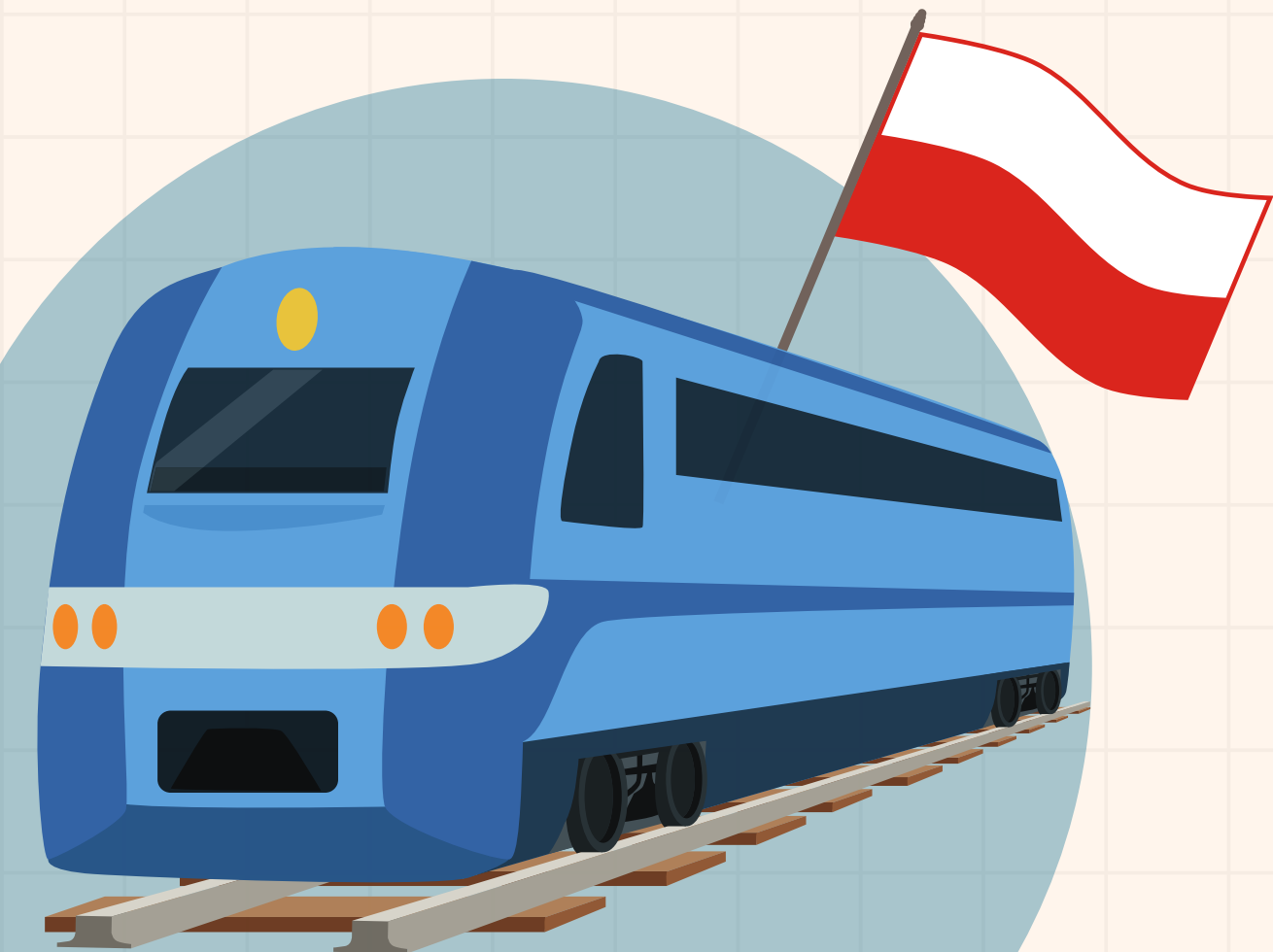
ERTMS IN POLAND

What can we learn from the Poland NIP about the deployment of ERTMS in the country?





2024 POLAND NIP



Poland's 2024 National Implementation Plan outlines a strategic rollout of the ERTMS/ETCS system, aiming to equip approximately **9.800 km** of rail lines, primarily within the TEN-T network, with ETCS Level 2 by 2050.



ETCS has been completed on **791.69 km** of railway lines. **626.72 km** were equipped with level 2, **120.25 km** in level 1 and **50.72 km** in level 1 Limited Supervision.



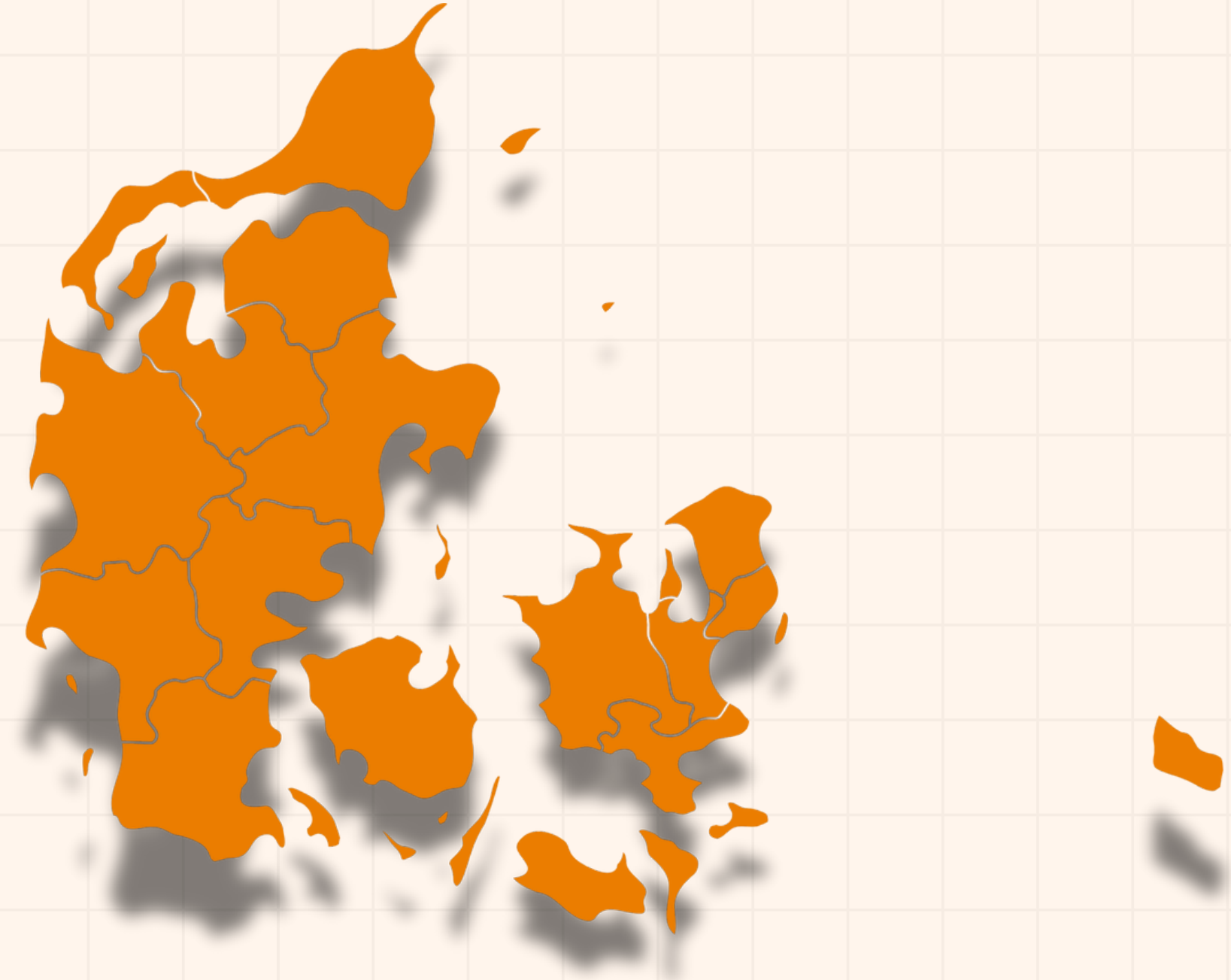
The older SHP (Class B) system will be gradually phased out by **2048**



#SIGNALLING

ERTMS IN DENMARK

What can we learn from
the Danish NIP about the
deployment of ERTMS in
the country?





DENMARK SIGNALLING PROGRAMME



FULL MIGRATION TO ERTMS LEVEL 2 BY 2033

Denmark is upgrading its entire rail network, phasing out legacy Class B systems.



KEY LINES ALREADY OPERATING WITH ERTMS BASELINE 3

Several corridors in both eastern and western Denmark are live with ETCS Level 2.



OVER 85% OF TRAINS ALREADY RETROFITTED

Most rolling stock is now equipped with ETCS and STM-DK for dual system operation.