

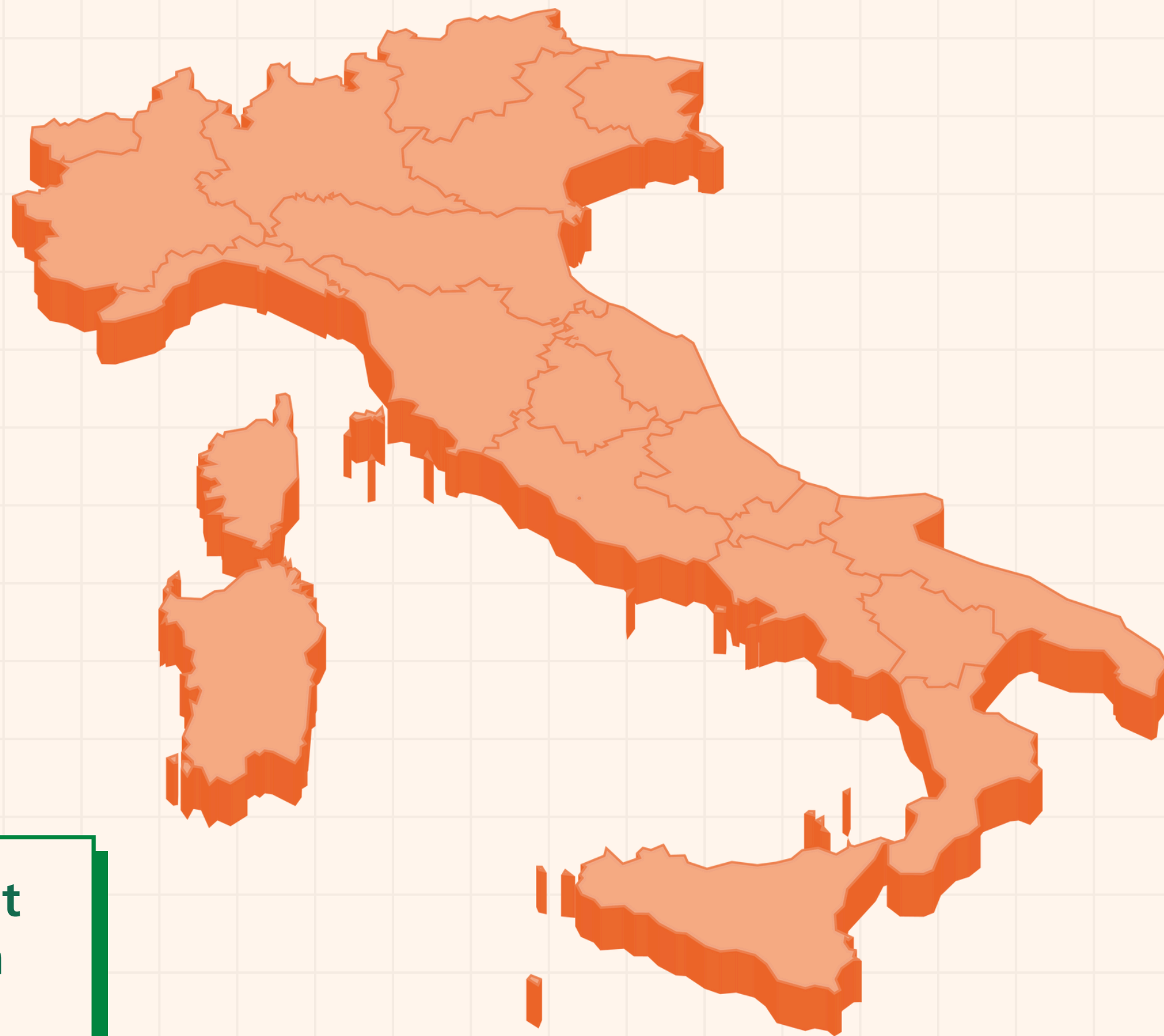


#SIGNALLING

ERTMS IN ITALY

Do you know the current
status of ERTMS deployment
in Italy?

Would you like to know more about
further enhancements to the Italian
railway network?



LET'S FIND OUT...



ERTMS IN ITALY

Implementing ERTMS in Italy

Italy has opted for **ERTMS Level 2 as the sole signalling system** on its new High Speed lines:



Rome-Naples (203 km) since December 2005



Turin-Novara (85 km) since February 2006



Padova-Mestre (25 km) since March 2007



Napoli-Salerno (29 km) since 2008



Bologna-Florence (80 km) since December 2009



Novara-Milan (40 km) since December 2009



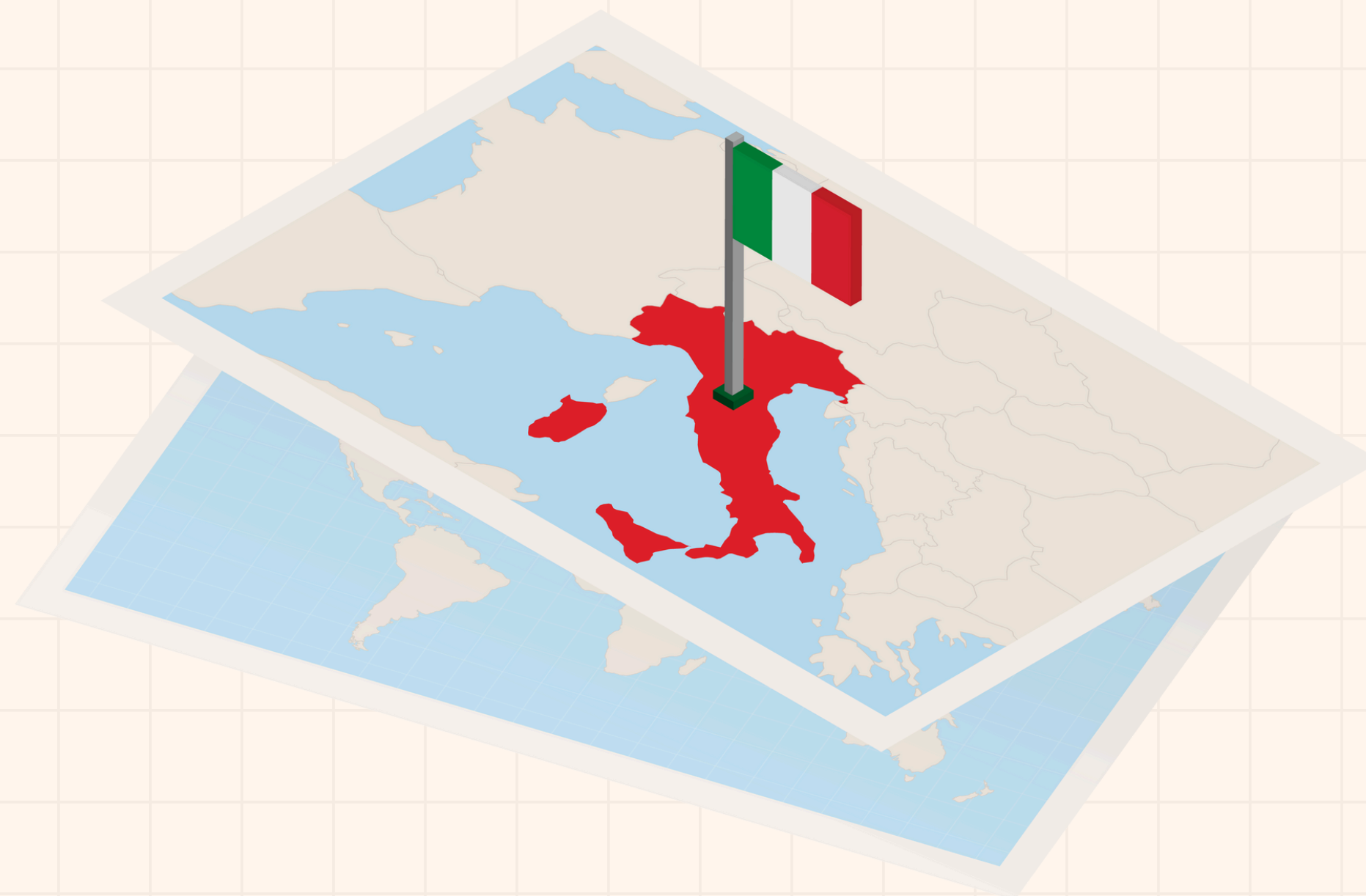
Treviglio – Brescia (40 km) since December 2016



Monza-Chiasso (40 km) since June 2020



Milan-Bologna (198 km, including “passante”) since December 2008



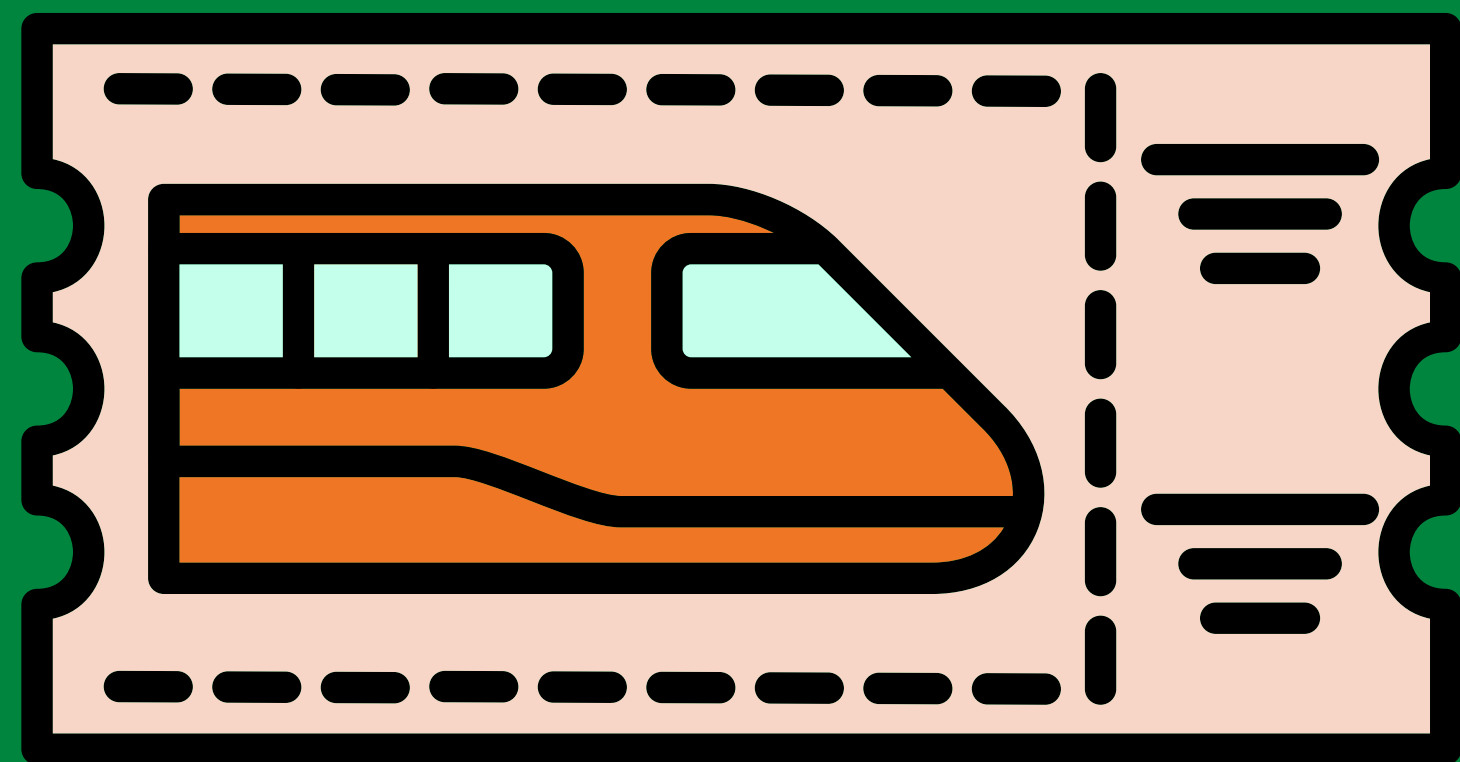
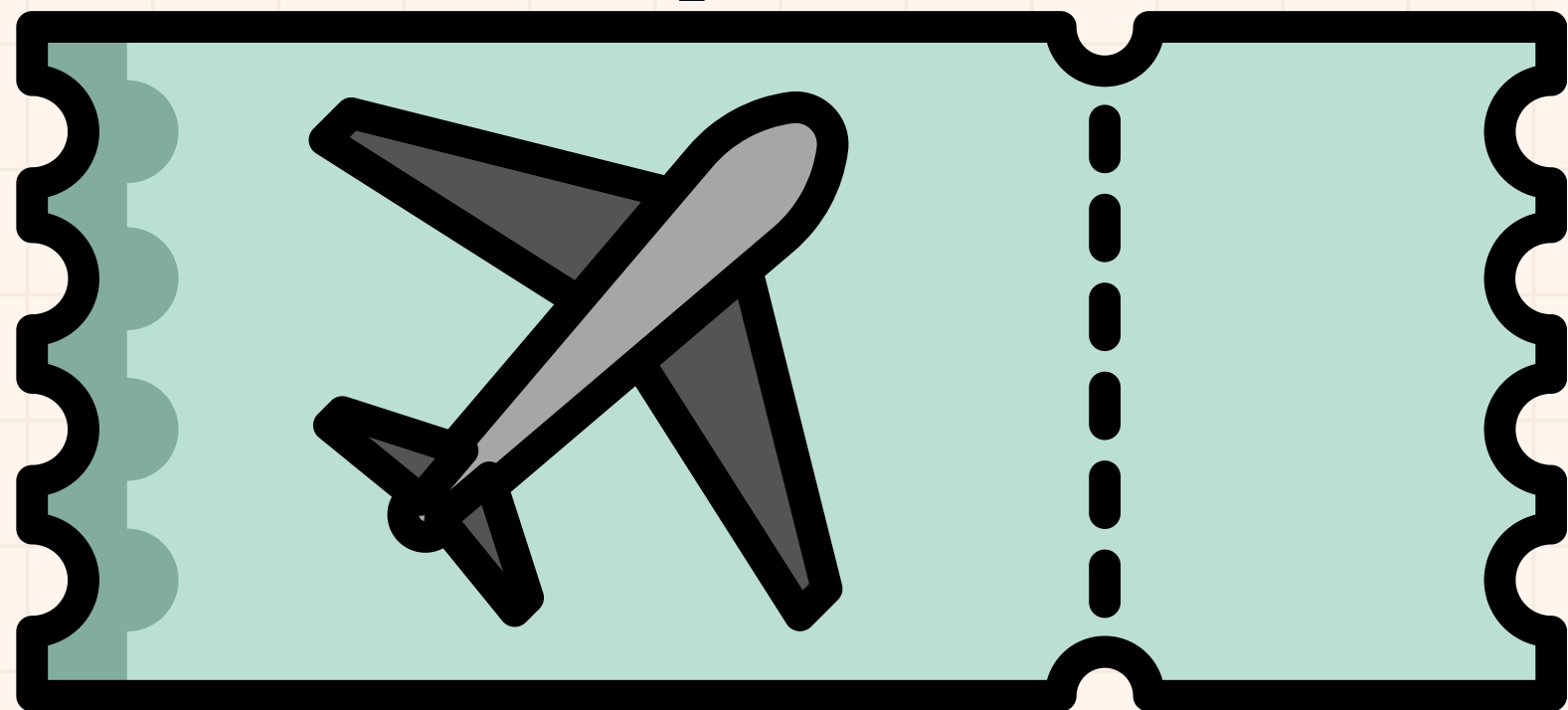
#SIGNALLING



ERTMS IN ITALY

Implementing ERTMS in Italy

From plane...



To train!

#SIGNALLING



ERTMS IN ITALY

Implementing ERTMS in Italy.

Rail overtakes air in the Rome–Milan corridor

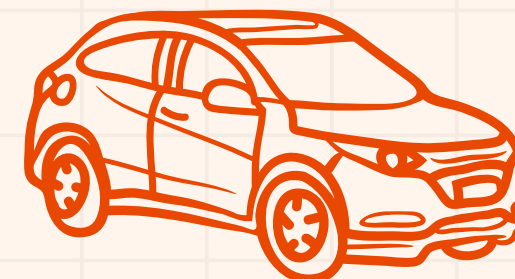
2010



55 %



35 %



10%

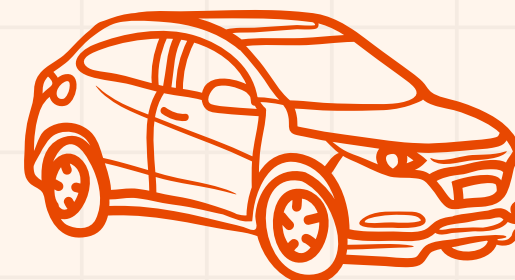
2015



65 %



24%



11%

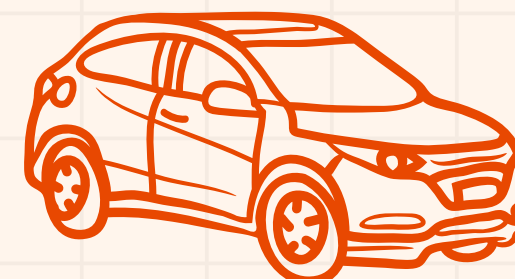
2024



68 %



22%



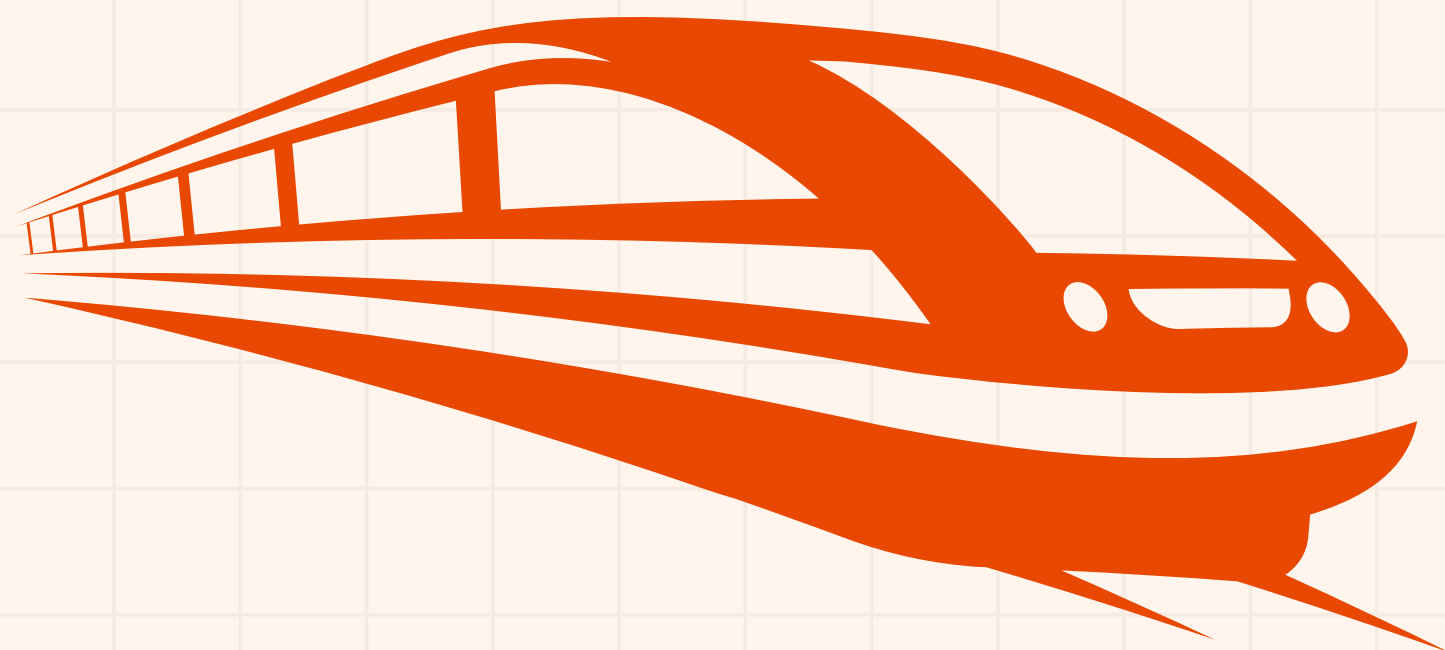
10%

#SIGNALLING



Heading towards lower emissions...

Traveling by train emits:



63% less CO₂ than



69% less CO₂ than



72% less CO₂ than

