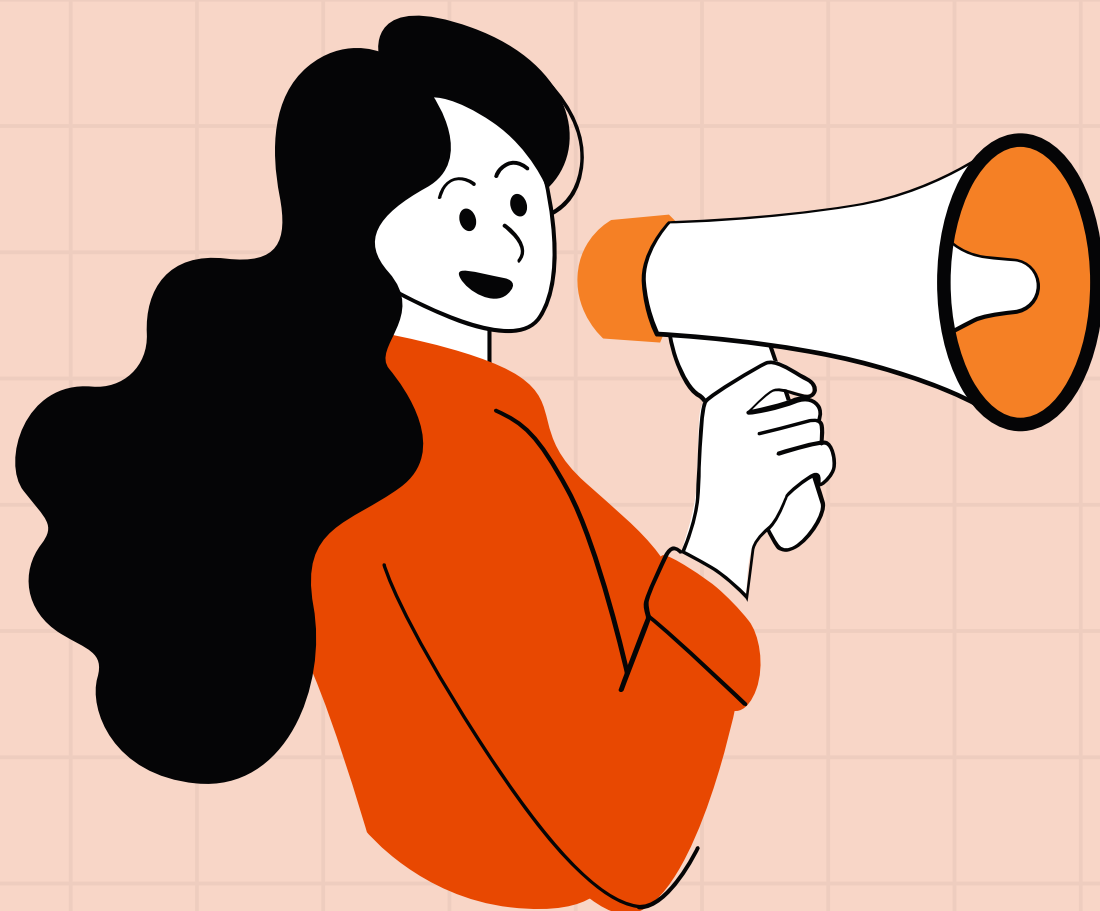




NEWS
NEWS
NEWS
NEWS
NEWS



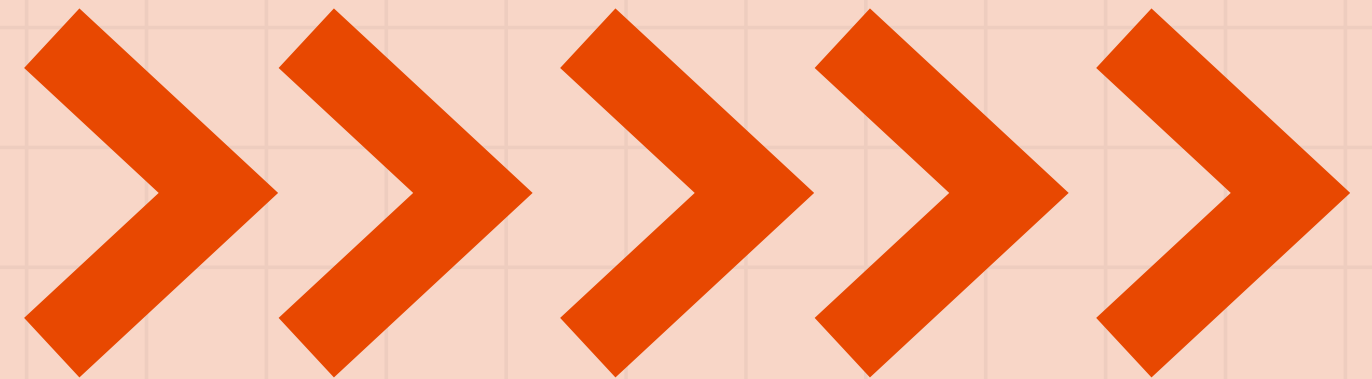
THE CCS TSI
AMENDMENT HAS
BEEN PUBLISHED IN
THE EU OFFICIAL
JOURNAL

April 2026



The primary objective of this amendment was to integrate essential missing specifications.

Our observations are



Subset-153, V1.0.0 – Exceptions for reduced on-board ETCS system version envelopes

This specification establishes the requirements for Baseline 4-compliant ETCS on-board units with a reduced envelope of system versions:

Envelope category	ETCS Baseline	Envelope of ETCS system versions (on-board)
Reduced envelope	BL 4 R1	1.0 – 2.1
		1.0 – 2.2
Full envelope		1.0 – 3.0

“ We welcome the introduction of Subset-153; however, to ensure a smooth implementation, **further refinement of the transition period in Annex B would be beneficial**, particularly regarding the clarity and consistency found in Table B1.1b (line 2) and Table B3b (line 4). ”



These specifications are required as per the CCS TSI for demonstrating ETCS on-board compliance via accredited laboratory reporting.

“ While the CCS TSI obliges manufacturers to use these specifications for certifying ETCS on-board interoperability constituents, their late publication following the entry into force of an ETCS Baseline remains a challenge.

We appreciate the transition period introduced in Table B3b (line 2); however, increasing clarity of the transition regime as well as the predictability and duration of this period—by reducing reliance on a future technical note—would further strengthen the framework, especially as the new version of Subset-076 undergoes its initial period of use. ”



This specification provides a framework for demonstrating interoperability between ATO on-board and trackside.



“

We look forward to its continued evolution through practical project experience.

”

Main modifications detected in the amendment

Beside the introduction of these fundamental specifications, the CCS TSI amendment encompasses the following notable changes:

- Appendix B transition tables with some improvements.
- Modifications to the error correction process, ensuring a strict link to the availability of the Baseline Compatibility Assessment (BCA) prior to the registration of error corrections in the Infrastructure Register (RINF).
- Editorial improvements.
- And many more...

